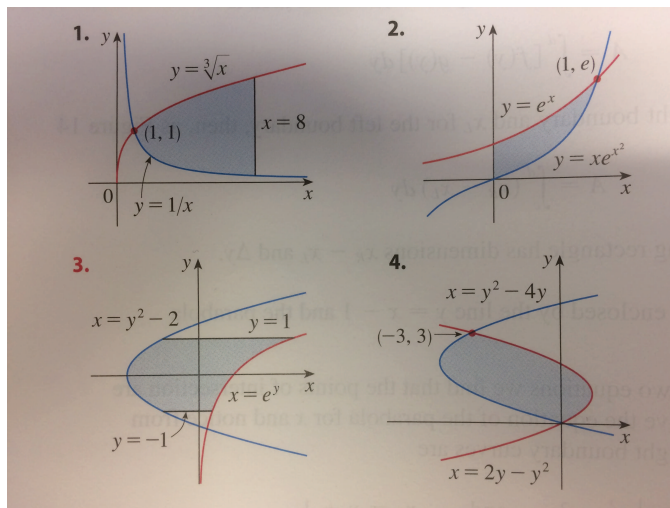


Quiz #19

1. Formulate the definite integral to find the area of the shaded region of



- a. Figure 1. [2]
- b. Figure 2. [2]
- c. Figure 3. [2]
- d. Figure 4. [2]

2. Formulate the definite integral to find the area of the region enclosed by the curves $y = \sin x$ and $y = \cos x$ from $x = 0$ to $x = \frac{\pi}{2}$.